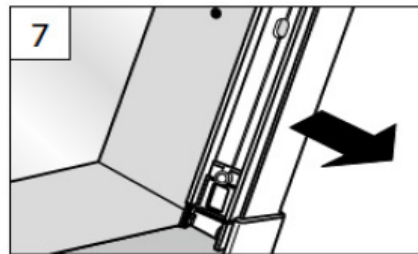
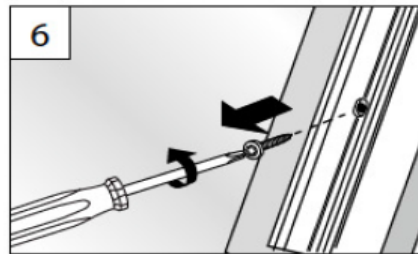
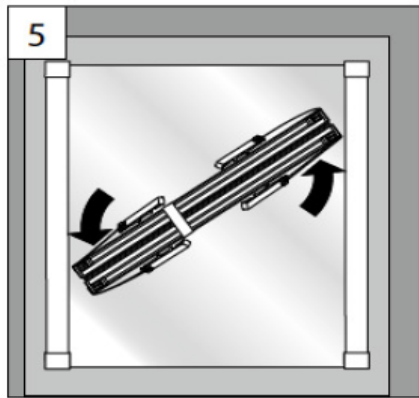


Montageanleitung Dachfensterplissee DF20 Comfort
vom Online-Rolloshop.de

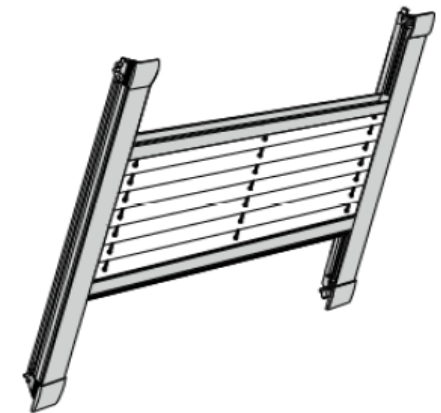


 Plissees
Pleated blinds – Stores plissés

DF Comfort 20

Montage- und
Bedienanleitung

*Assembly and operating instructions
Notice de montage et mode d'emploi*



7

10 / 2014
technische Änderungen bleiben
vorbehalten

*subject to technical change
sous réserve de modifications techniques*



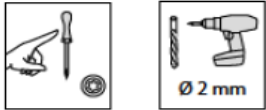
799028521

A Montage

Fixation – Montage

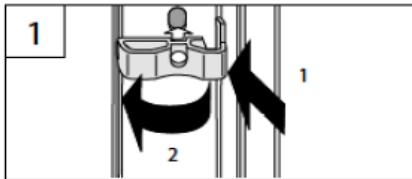
→ Bitte nur beiliegende Schrauben verwenden!

Please use only the enclosed screws! - Veuillez utiliser seulement les vis jointes!

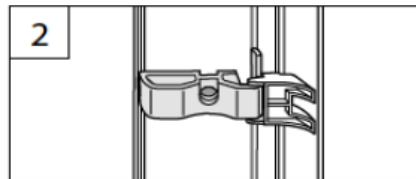
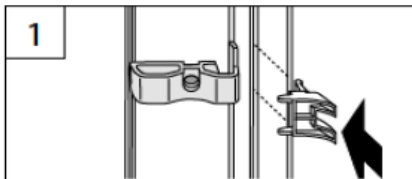


VORBEREITUNG

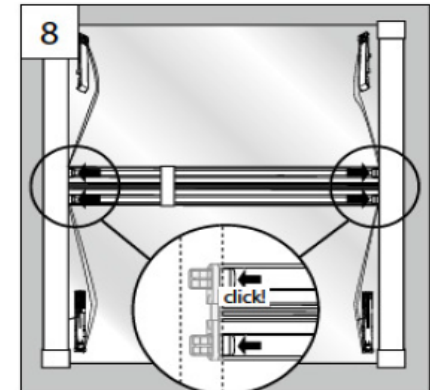
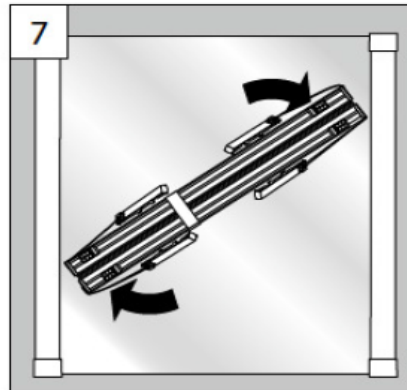
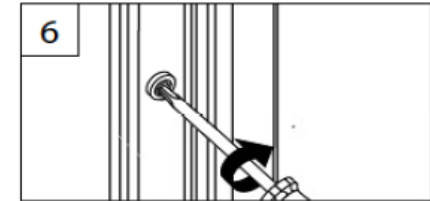
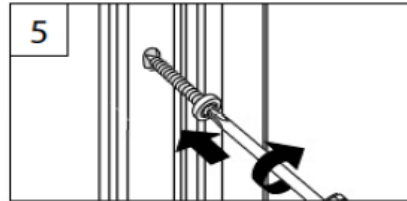
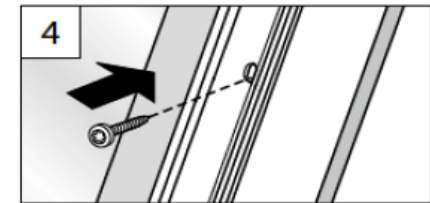
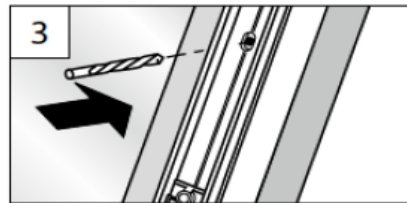
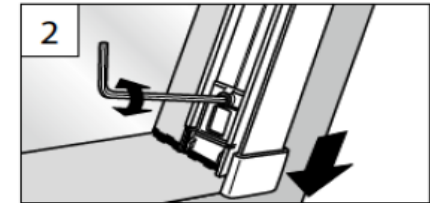
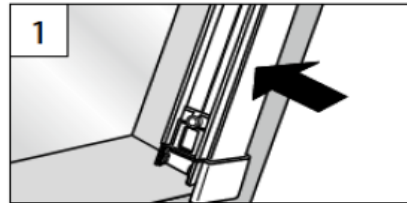
PREPARATION – PRÉPARATION



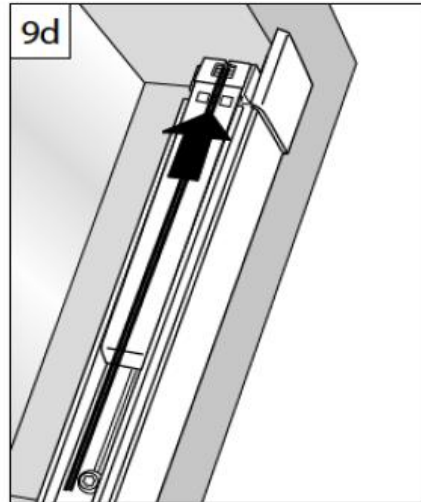
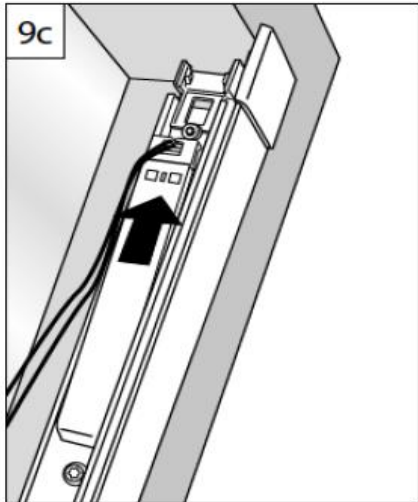
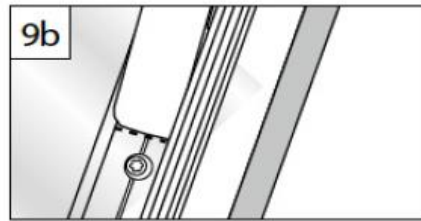
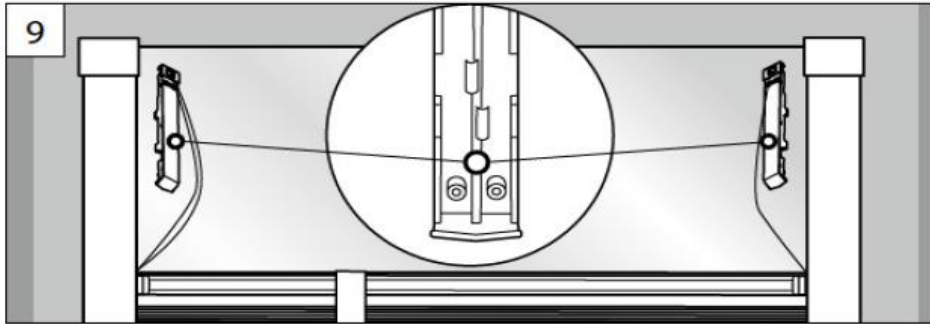
Roto R6., R8..., 6..K, 8..K..



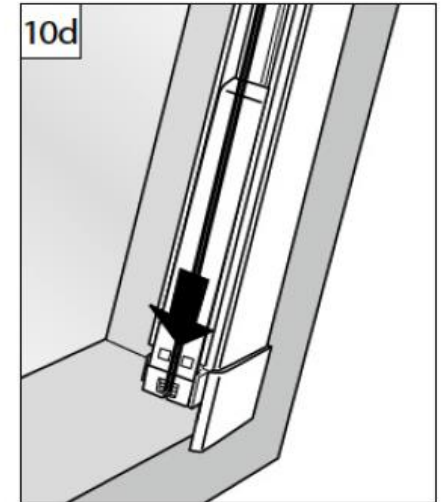
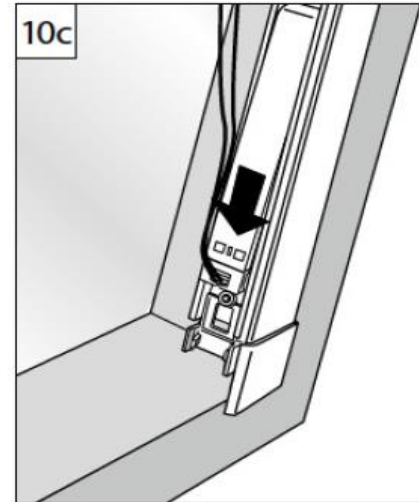
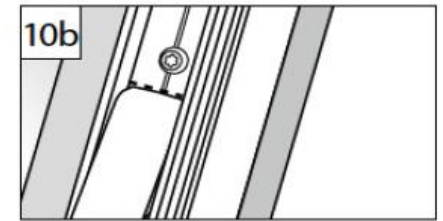
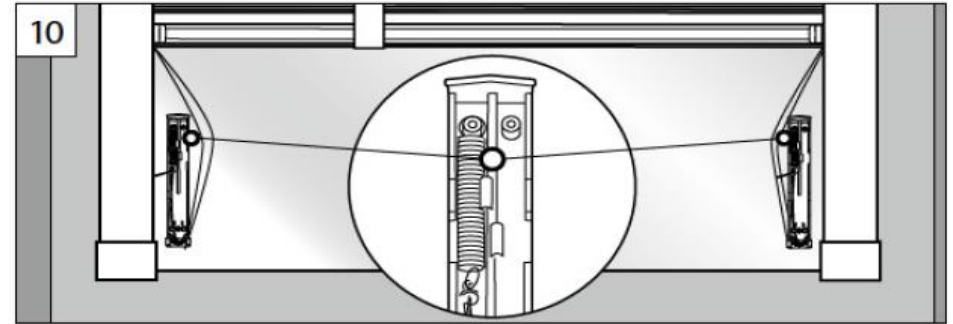
1



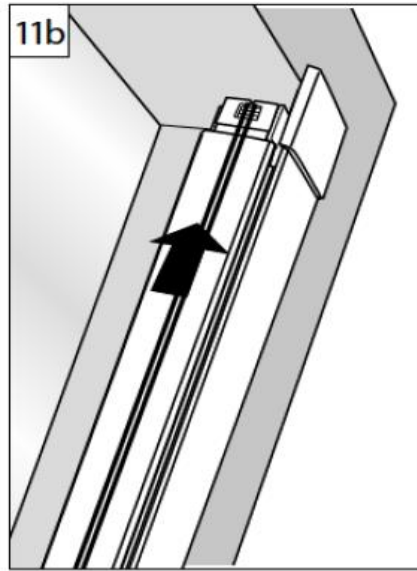
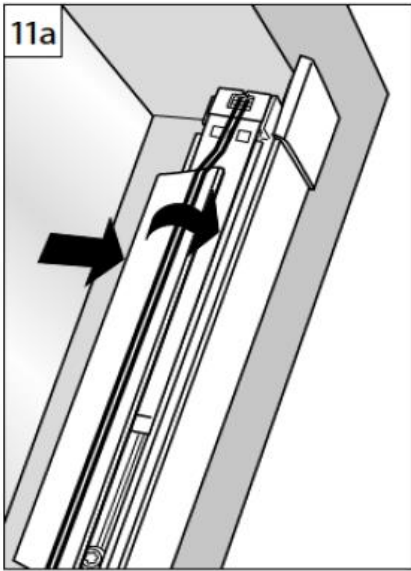
2



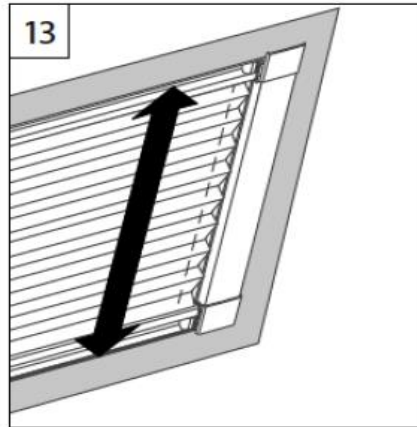
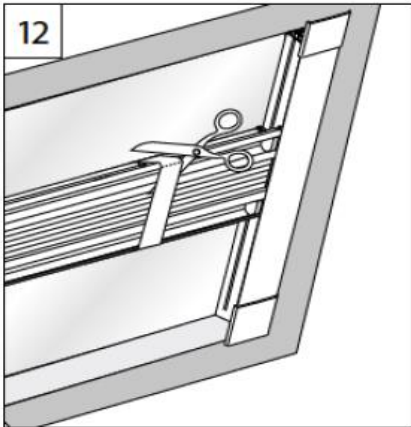
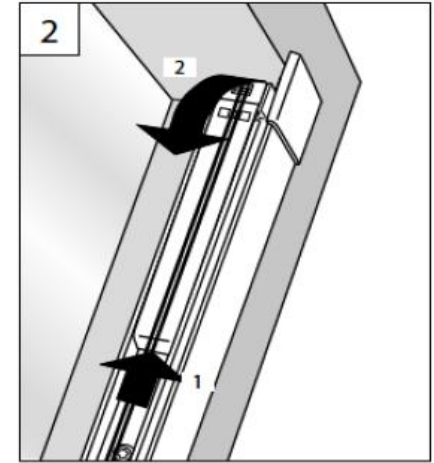
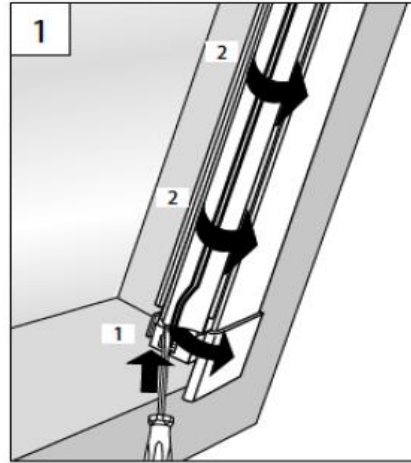
3



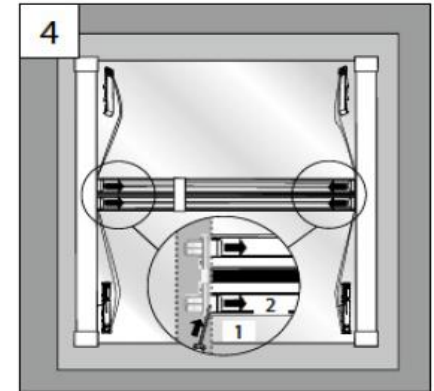
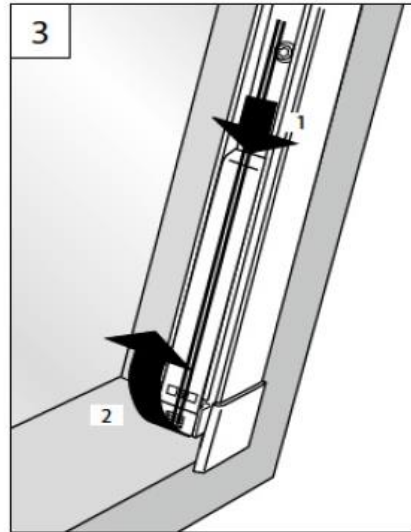
4



B Demontage
Dismantling - D montage



5



6

Hier endet unsere Montageanleitung für Dachfensterplissee Comfort DF20
ausführliche Anlagenbeschreibungen finden Sie unter folgenden Links

[Dachfensterplissee DF 10 & 20 genormt](#)
[Dachfensterplissee DF 10 & 20 ungenormt](#)
[Dachfensterplissee Comfort DF 10 & 20 genormt](#)
[Dachfensterplissee Comfort DF 10 & 20 ungenormt](#)

oder alle 4 Anlagen auf einen Blick unter

[Dachfenster Plissees](#)

Wir freuen uns auf Ihren Besuch in unserem Shop

<https://www.online-rolloshop.de/>

Falls Sie Fragen zu unseren Dachfenster Plissees haben stehen wir Ihnen jederzeit persönlich
mit Rat und Tat zur Seite unter Tel. 036628 89152 oder per E-Mail

shop@online-rolloshop.de

Antje Walther
Online Rolloshop
Sommerseite 27/OT Pöllwitz
07937 Zeulenroda-Triebes