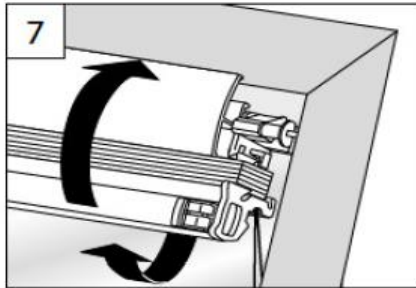
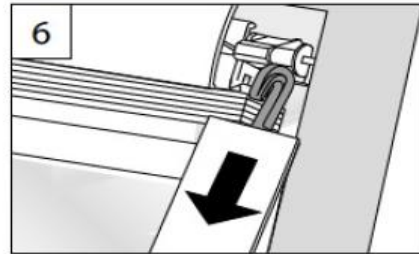
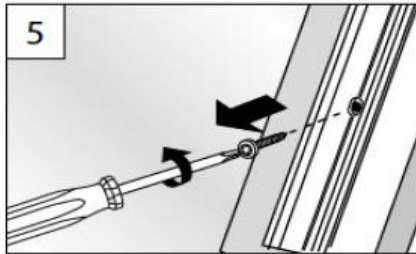


Montageanleitung Dachfensterplissee Comfort DF10  
vom Online-Rolloshop.de

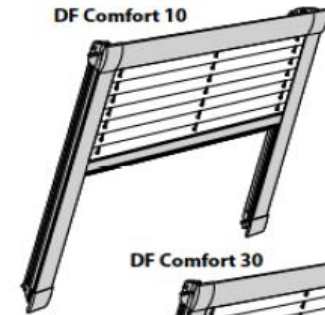


 Plissees  
*Pleated blinds – Stores plissés*

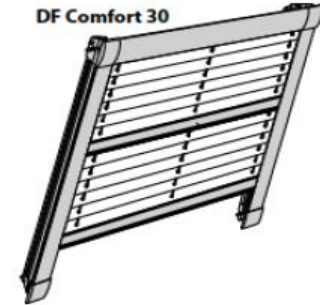
## DF Comfort 10/30

Montage- und  
Bedienanleitung  
*Assembly and operating instructions  
Notice de montage et mode d'emploi*

DF Comfort 10



DF Comfort 30



# A Montage

Fixation – Montage

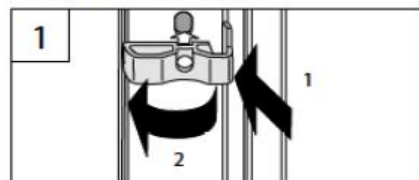
→ Bitte nur beiliegende Schrauben verwenden!

Please use only the enclosed screws! - Veuillez utiliser seulement les vis jointes!

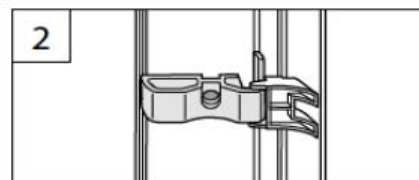
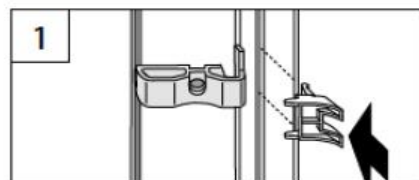


## VORBEREITUNG

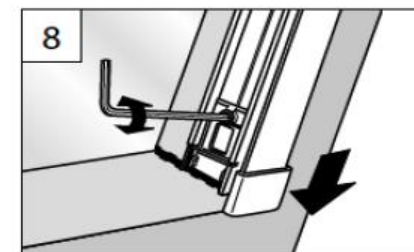
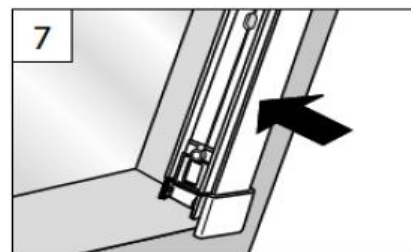
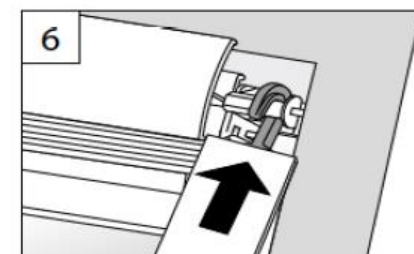
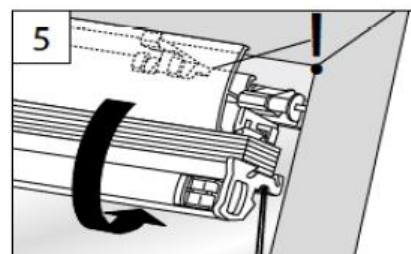
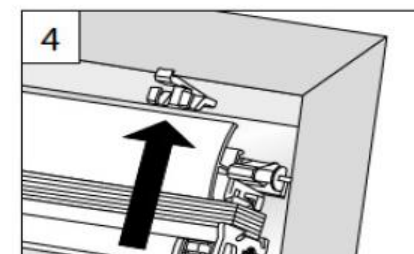
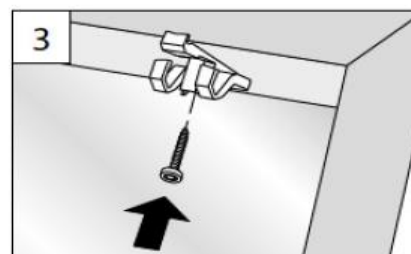
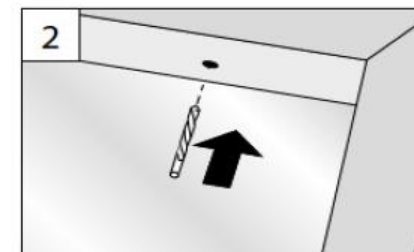
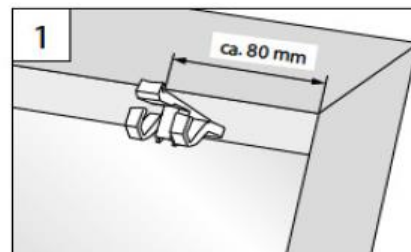
PREPARATION – PRÉPARATION



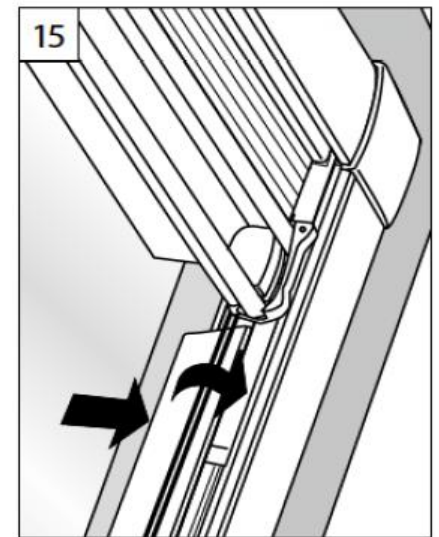
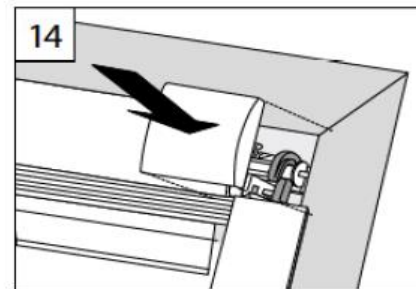
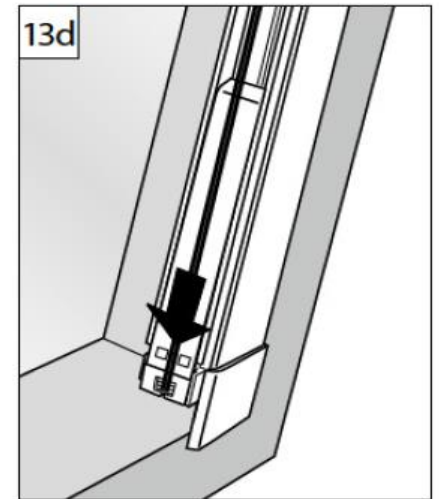
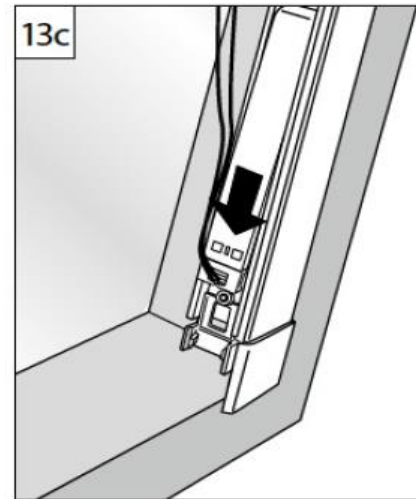
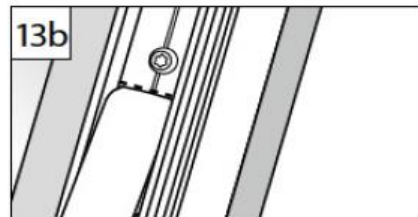
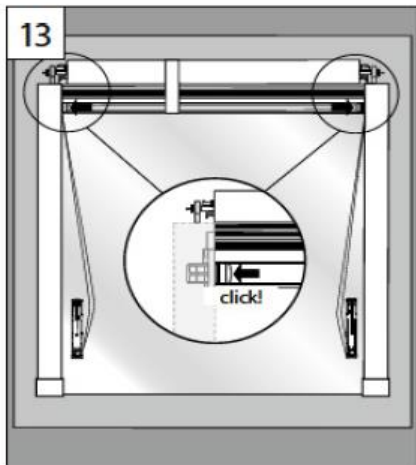
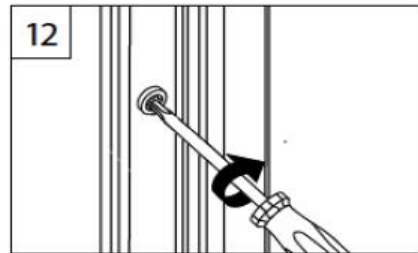
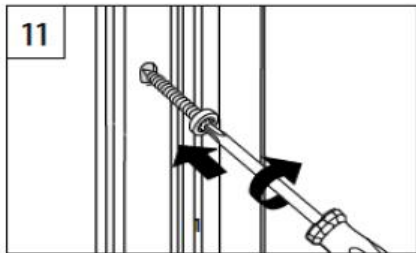
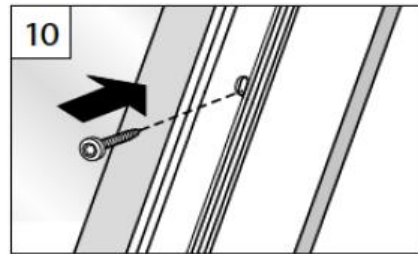
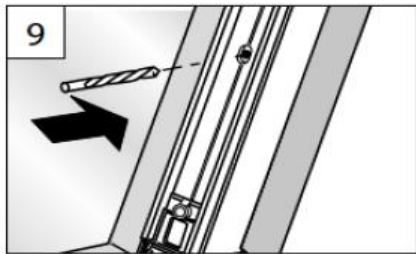
Roto R6.., R8..., 6..K, 8..K..

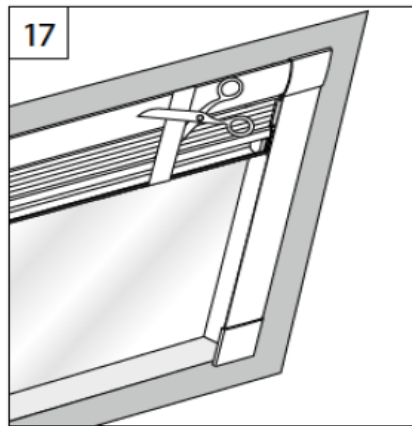
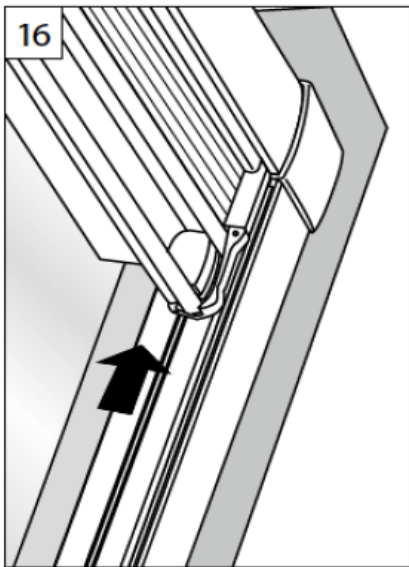


1



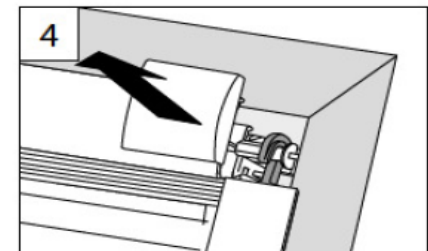
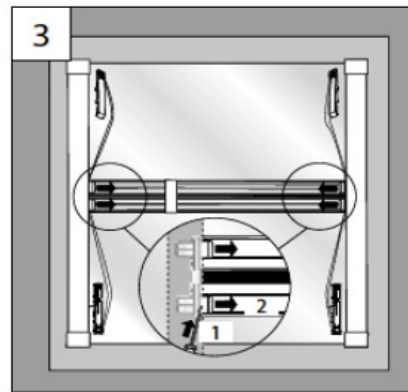
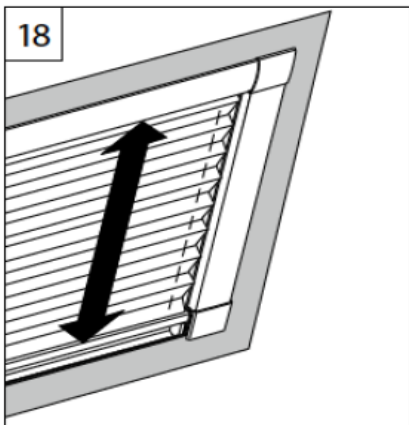
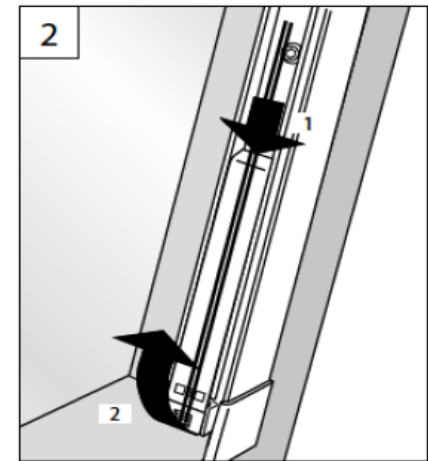
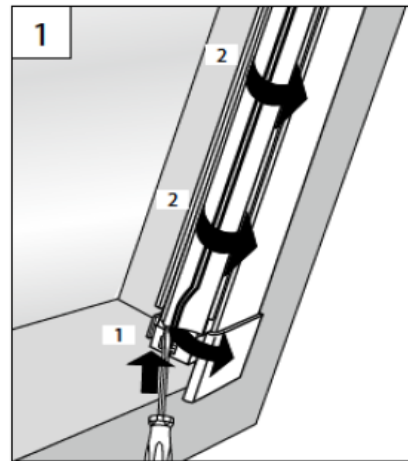
2





## B Demontage

*Dismantling - Démontage*



5

6

Hier endet unsere Montageanleitung für Dachfensterplissee Comfort DF10  
ausführliche Anlagenbeschreibungen finden Sie unter folgenden Links

[Dachfensterplissee DF 10 & 20 genormt](#)  
[Dachfensterplissee DF 10 & 20 ungenormt](#)  
[Dachfensterplissee Comfort DF 10 & 20 genormt](#)  
[Dachfensterplissee Comfort DF 10 & 20 ungenormt](#)

oder alle 4 Anlagen auf einen Blick unter

[Dachfenster Plissees](#)

Wir freuen uns auf Ihren Besuch in unserem Shop

<https://www.online-rolloshop.de/>

Falls Sie Fragen zu unseren Dachfenster Plissees haben stehen wir Ihnen jederzeit persönlich  
mit Rat und Tat zur Seite unter Tel. 036628 89152 oder per E-Mail

[shop@online-rolloshop.de](mailto:shop@online-rolloshop.de)

Antje Walther  
Online Rolloshop  
Sommerseite 27/OT Pöllwitz  
07937 Zeulenroda-Triebes